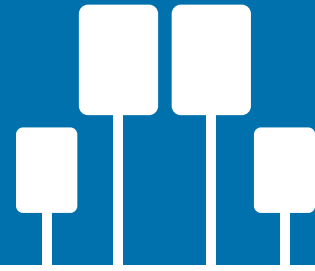


the  
**EVA FAMILY**  
of  
Digital X-Ray Systems



# Go digital and see the benefits throughout your office



## EVA Family Advantages

### Patient Consultation

- » More efficient treatment, recall of images, increased production and reduced costs
- » Co-Diagnosis for you and the patient
- » Give your patients a high technology experience

### In the Operatory

- » Instant display of radiographic images
- » Reduced patient chair time and waiting time
- » Real-time images allow for best treatment of time sensitive procedures
- » Co-Diagnosis for you and the patient
- » Give your patients a high technology experience

### Receptionist/ Office Manager

- » Electronic communication with insurance companies
- » Maximized organization with instant and secure image storage and retrieval
- » Never lose or misfile radiographs again

### Processing Room

- » The darkroom is eliminated – Better utilize your office space
- » No film and no developer or fixer chemicals – Be more environmentally friendly and save money with every X-Ray
- » Saving time = Reduced labor costs = Less overhead

### Hygienist

- » Improved comfort and patient safety improve chair time experience
- » Consistent images means less retakes and saves time
- » Spend more time discussing the potential for cosmetic and higher revenue generating procedures

### For the Patient

- » Lower X-Ray exposure to patients – Safety is always a number one concern
- » Larger and detailed image display to educate patients
- » Image enhancements for improved viewing
- » Educate your patients – Improved treatment plan presentations
- » A high technology experience

Ideally suited for endodontic applications and caries detection, the operational simplicity of digital radiography consolidates workflow as it builds productivity.

### The EVA Digital X-Ray System

TWO SENSOR SIZES (#1 and #2) for patients of any size.

**IMPROVED WORKFLOW** – EVA Digital X-Ray Systems are modular and allow you to move sensors between operatories. This configuration makes the transition and investment to digital with EVA, the most cost effective in the marketplace.

**INFECTION CONTROL** – EVA Digital X-Ray Systems minimize mouse clicks, keyboard use and automatically save images and view them on the PC. Save time and maintain a sterile environment without the need to go back and forth from computer to patient.

**THE SMALL FOOTPRINT** of EVA Digital X-Ray Systems fit in the palm of your hand and will easily and seamlessly integrate into even the smallest operatory.

**CMOS TECHNOLOGY** – EVA Digital X-Ray Systems use the newest technology – CMOS, which requires a fraction of the power of CCD, and has a simple, more durable design.

**NO PLUGS** or power outlets are required!

**SUPERIOR SENSOR CASING** – All EVA Digital X-Ray Systems are ultrasonically welded to prevent damage from a biting patient. The sensor capsule is highly durable, and unlike some competing systems made from fragile metal casings, the durable thermoplastic is highly impact resistant.

**USER FRIENDLY, DENT-X PROIMAGE** Dental Imaging Management System is included for free!



# EVA

EVA is the digital x-ray system that delivers big value. Backed by the proven reliability of thousands of installations ranging from single chair clinics to 35 office dental chains, EVA offers a rugged sensor design in the industry's classic style.

Just a few millimeters thin, EVA delivers crisp, clear radiographs with virtually any intraoral x-ray head. The CMOS imaging chip is designed for maximum durability, and the sensor sizes are nearly identical to Size One and Size Two films. Fast USB 2.0 connectivity delivers images to the computer monitor in seconds.

EVA's value makes it an ideal choice for large installations and value-conscious practices. No other product on the market delivers EVA's combination of superior image quality, easy expandability with inexpensive docking stations, and a standard three-year manufacturer's warranty.



Thousands of Users.  
Classic design.  
High quality.  
Proven durability

That's EVA  
Digital X-Ray.



# EVA+

EVA+ is the first and only sensor to offer rounded top corners in **all three planes**, making it the most comfortable, ergonomically correct sensor on the market. Furthermore, EVA+ has added this comfort aspect without sacrificing image size or cutting corners like other systems. EVA+ has a full rectangular imaging area designed by limiting distance between the edge of the active imaging area and the physical contour of the capsule.

By careful three-dimensional design of the sensor capsule and its contents, EVA+ guarantees maximum patient comfort and permits correct positioning at the most distal parts of the oral cavity.

Avoid image distortions with EVA+. It's a more comfortable, ergonomically correct sensor that allows you to properly visualize and subsequently diagnose more effectively.

How comfortable is EVA+? The most critical aspect is positioning (especially for size #2) at the upper molars, where the upper corners of

For more than five years, thousands of EVA Digital X-Ray customers have been reaping the benefits of a great quality digital x-ray sensor at an affordable price.

One size does not fit all

EVA SIZE #1



EVA SIZE #2



EVA+ SIZE #2



EVA+ SIZE #1



## Comfortable, Accurate, and Affordable

sensors push against the patient's palate causing discomfort and gagging. Hence, comfort and ease of positioning are significantly improved by rounding the two upper corners where the sensor may press against the palate, as opposed to having thin wedge-like corners.

Others claim to have the same roundness, however, these competing products achieve corner roundness by clipping the corners of the imaging chip, and consequently of the resulting image.



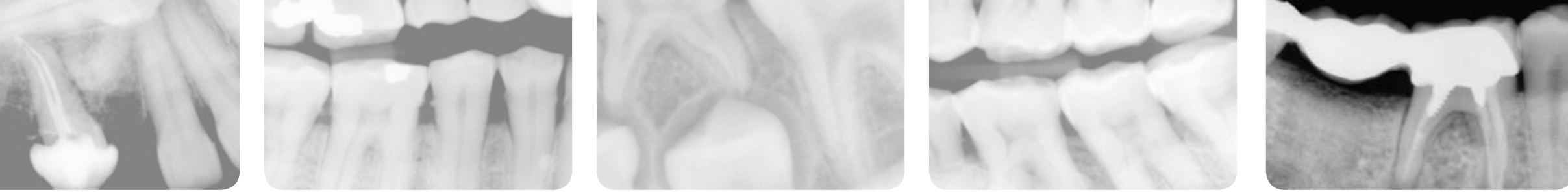
With the EVA+ imaging chip, there are no clipped corners, unlike the competition (blue corners indicate lost image area in competitors' products).

EVA+ is comfortable, accurate, and complete with the **maximized image area** you and your patients need.

Additionally, the interface now supports USB 2.0 so "hot-swapping" or the ability to jump from operator to operator. USB 2.0 automatically will detect the EVA+ sensor, and display images in seconds.



DENTIX  
Visionary Imaging



# Prolmage Software

Prolmage is Dent-X's Dental Image Management software designed to meet the needs of today's dental practice.

It is easy to learn and simple to operate. It has all the advanced features needed in multiple languages to deliver rapid, effective diagnosis.

Prolmage delivers the flexibility and expandability to support digital X-Ray, scanned input applications and intraoral cameras and video imaging. Best of all, it has no licensing fees, so you can load the software on every computer in the office at no additional cost, unlike other systems that charge you every time you install the software.

## Optional Integration with Practice Management Software:

Worried about integration with your existing Practice Management Software? Don't be, there's no need to. Prolmage can integrate with most Practice Management packages either inherently or with ProIntegrate, Dent-X's Practice Management Software Bridge. Additionally, Prolmage supports any device that has TWAIN drivers so it is possible to use many of your existing devices with Prolmage, such as an intraoral camera.

## Compatible with the Following Practice Management Software Packages:

- |                             |                    |
|-----------------------------|--------------------|
| ABELDent                    | Innova             |
| ACE Dental                  | Integra            |
| ADSTRA                      | Intelligent        |
| AltaPoint                   | J. Morita          |
| Apteryx                     | Lightyear          |
| AVI Mark                    | Mediadent          |
| Computer Age Dentist CADwin | Mediadent          |
| Data Team                   | meerMANAGER        |
| dental.com                  | MOGO               |
| DentalEye                   | OrthoTrack         |
| Dentisoft                   | Patient Base       |
| Dentrix                     | Power Practice Pro |
| DESCO                       | PracticeWorks      |
| Discus                      | Prof. Suni         |
| EagleSoft                   | SoftDent           |
| Easy Dental                 | TDOCS              |
| Exact Dental System         | TigerView          |
| First Pacific               | Visiodent          |
| Genesis                     | WinOMS             |
| ImageFX                     |                    |

and many more!

## A Comprehensive Toolset:

- » Colorization, histogram, brightness, contrast and negative controls
- » Measurement tools
- » Specific mode for Endodontics
- » Spotlight tool
- » Add text, lines, notes, and shapes on any image



# What's Included

Each EVA Digital X-Ray System includes:

- » EVA Digital X-Ray Sensor
- » Docking station (1)
- » Protective sheaths (1 box)
- » RINN compatible positioning aids
- » USB cable
- » Prolmage Dental Image Management Software

# The Dent-X Advantage

FREE THREE YEAR MANUFACTURER'S WARRANTY!

FREE lifetime technical assistance with conversion questions from Film to Digital

FREE and accessible Technical Support (phone and online)

FREE upgrades and NO Licensing fees for Prolmage Dental Image Management software

Made with pride in the USA

# Proven, Reliable, and Affordable



# Go digital with EVA—It's the smartest investment for the future of your practice you can make

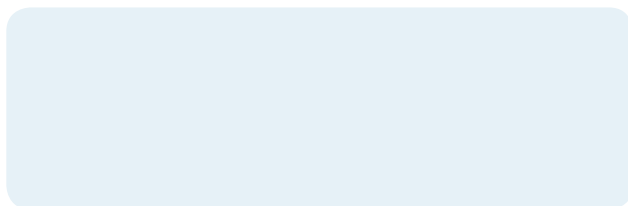
## AFP Imaging/Dent-X Background

AFP Imaging Corporation (OTCBB:AFPC:OB) is the parent Company of Dent-X and the EVA product lines. AFP and its subsidiaries have annual revenues in excess of \$25 million and over 25 years of experience in research, product development, manufacturing, distribution and servicing of its medical, dental, and veterinary imaging products.

Sold worldwide, the AFP family of digital products has an outstanding reputation for ISO 9001 quality and reliability. From the demanding environmental conditions of a remote clinic in South American rain forest to the high volume requirements of a major New York medical center, AFP digital products are the indispensable tools of medical, dental, veterinary and industrial professionals.

AFP is committed to its comprehensive global dealer network of sales and services representatives, who educate and support our valued professional customers.

Dent-X, Prolmage, and EVA are registered trademarks of AFP Imaging Corp.



250 Clearbrook Rd  
Elmsford, New York  
10523 USA



914.592.6665  
800.225.1702  
www.dent-x.com

## EVA and EVA+ System Specifications\*

EVA Size #2 System Part Number	99924I0200
Active Area	25.8 mm x 36 mm
Capsule Dimensions	30.8 mm x 44 mm x 5 mm
Image Size (unpacked)	2.1 megabytes
EVA Size #1 System Part Number	99924I0100
Active Area	20 mm x 30mm
Capsule Dimensions	25.6 mm x 38.4 mm x 5 mm
Image Size (unpacked)	1.3 megabytes
EVA+ Size #2 System Part Number	99924II200
Active Area	25.8 mm x 36 mm
Capsule Dimensions	32 mm x 47 mm x 6.4 mm
Image Size (unpacked)	2.1 megabytes
EVA+ Size #1 System Part Number	99924III00
Active Area	20 mm x 30mm
Capsule Dimensions	27 mm x 40 mm x 6.4 mm
Image Size (unpacked)	1.3 megabytes
Sensor Type	Active Column CMOS
Gray Shades	4096 (12 bits)
Optical Imager Resolution	16.7 lp/mm
Pixel Size	30 um x 30 um
Sensor Cable Length	2 m (~6 ft)
Power Supply	USB Powered Device – No external power supply needed
Interface	EVA USB 1.0 / EVA+ USB2.0
Shipping Weight	Approx 5 lbs
Warranty	3 Years Parts and Factory Service
Safety Certifications	FDA, CSA, (US and Canada) CE, IEC 60601-1-2
Minimum Computer Requirements	Pentium 4 – 2GHz 512 MB 80 GB Hard Drive CD-R Drive Display 1024 x 768 @ 32 bit

\*Computer is NOT supplied with the EVA Digital X-Ray System

\*Specifications subject to change without notice

SM-DI32-00